

# 1st Biennial



SASKATCHEWAN  
CRAFT COUNCIL



The First Biennial Juried Exhibition is a reality because a few craftspeople three and one-half years ago decided they needed a craft organization. The Saskatchewan Craft Council was founded in September of 1975. The juried exhibition was one of the initial ideas that was suggested by the membership.

We want the show to start to break down some of the misconceptions about craft. Many people have categorized craft as somewhere below art. These same people will pay an artist for the creativity in his art piece but balk at paying much more than a materials price for a craft object.

The exhibition will start to show Saskatchewan residents the quality of craft that is being created in Saskatchewan. We hope that you enjoy it.

Barry Lipton  
Past Chairman  
Saskatchewan Craft Council

# 1<sup>st</sup> Biennial



**SASKATCHEWAN  
CRAFT COUNCIL**

*a juried exhibition of works by Saskatchewan Craft Council members*  
*JURORS: Lea Collins, John Graham*

*DECEMBER 16 — JANUARY 23*

*dunlop art gallery, Regina Public Library*

with the support and assistance of Sask Sport Trust and the Dunlop Art Gallery



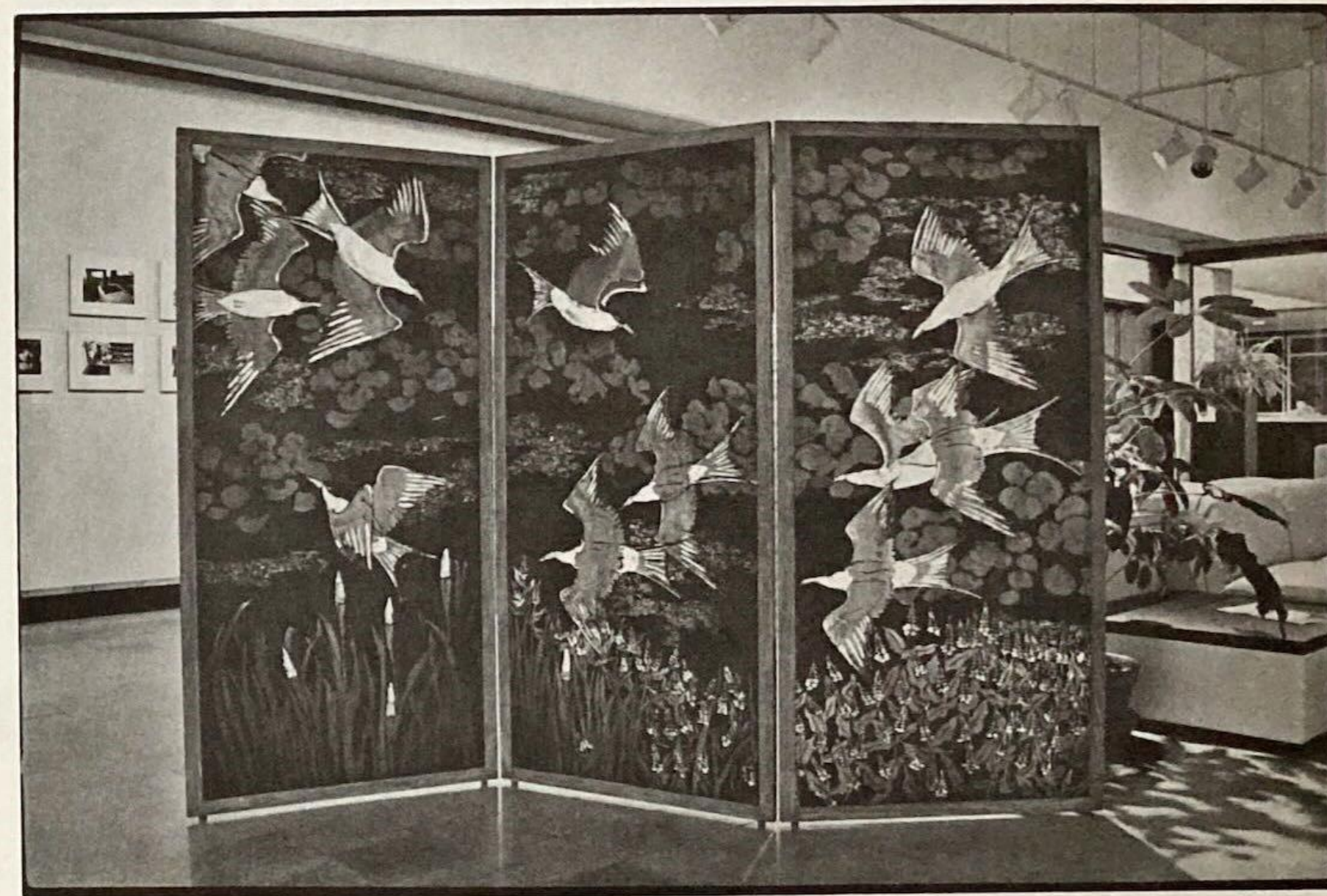
#### JURORS' STATEMENT

It is the opinion of the jurors that the Saskatchewan Craft Council set its feet upon the right path when it drafted its 1978 Standards Report. Without inhibiting creativity, the report clearly defines and ranks the criteria to be used in evaluating the quality of a craft art work. The inherent latitude which these guidelines provide is valuable for individual artists appraising their own works as well as for anyone responding to it.

The pyramidal four tier system clarified and thereby simplified our task of selecting work to be considered part of a showcase of some of the best work being done in the province. In this regard, it was a matter of disappointment and concern to us that a number of established and well known craftsmen in the province, for whatever reasons, were not represented among the entries. If the differentiation between art and craft is truly to be dissolved, then artist-craftsmen of whatever degree must themselves demonstrably subscribe to this idea.

Nevertheless, we were impressed with the general excellence of work submitted for our consideration. It was of particular interest to observe the degree to which the prairie landscape with its qualities of light and space left its imprint upon much of the work, whether in direct imagery or merely in the textures, forms, and colours, of the more abstract or non-objective pieces.

Lea Collins  
John Graham



THE SUMMER SOLSTICE  
cotton, batik, oak, 1978  
YOSHIMI WOOLSEY



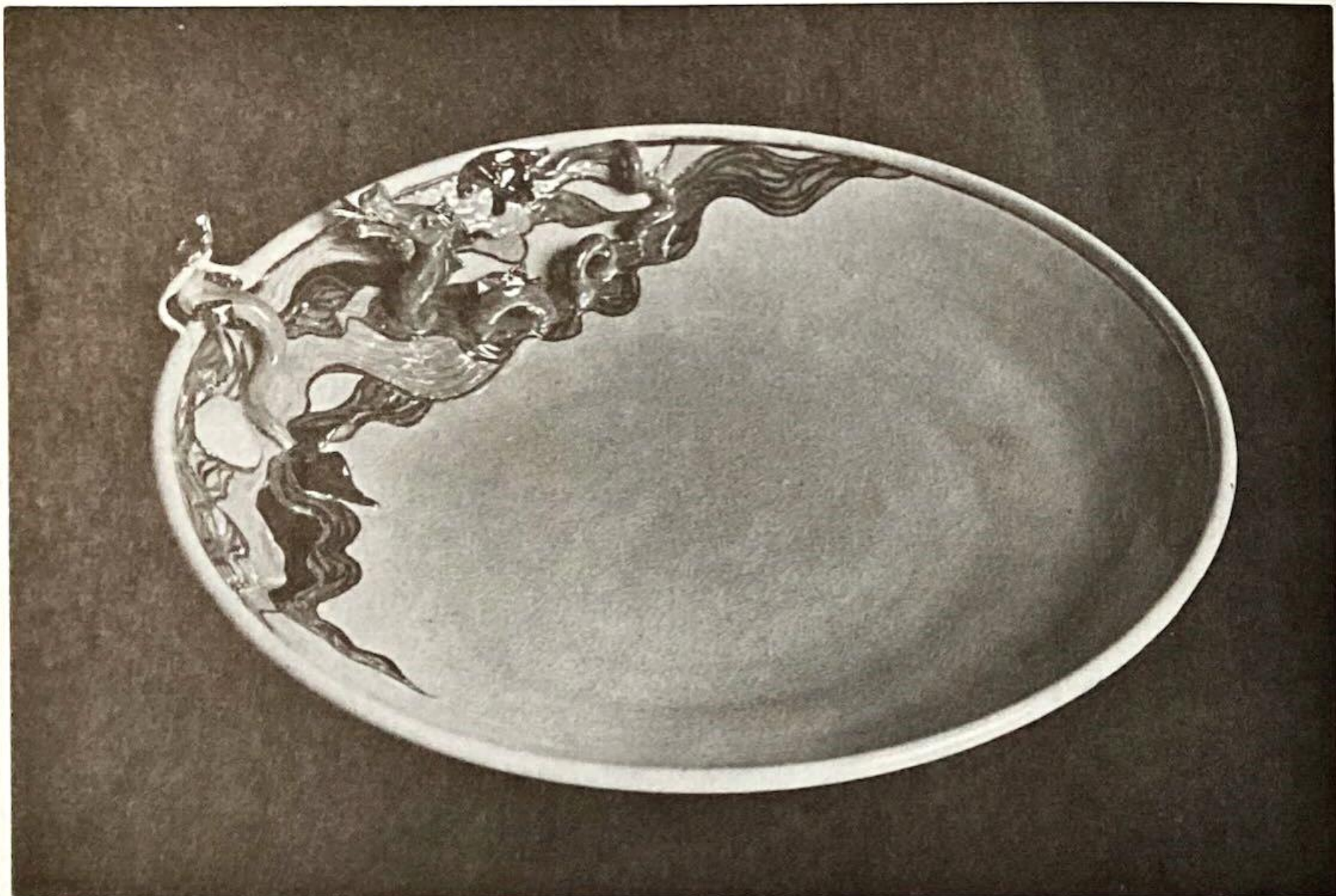


LANDSCAPE SHAWL  
commercial wool, mohair  
twill and tapestry weave, 1978  
CATHRYN MILLER



SUE-ANNE'S TIPI CREEPERS  
leather, hand laced and stitched, 1978  
DAVID ORBAN





SEA  
porcelain, lustre glazes  
wheel thrown and handbuilt, 1978  
ANITA ROCAMORA

#### LIST OF WORKS

1. HANDWOVEN RUG #786  
goathair and commercial linen  
weft face, four harness weave, 1978  
PATRICK ADAMS  
Collection of Greta Wagner, Regina
2. HANDWOVEN RUG #789  
commercial wool and linen  
weft face, four harness weave, 1978  
PATRICK ADAMS  
Collection of Shelley Hamilton, Saskatoon
3. HANDWOVEN RUG #7811  
commercial wool and linen  
weft face, four harness weave, 1978  
PATRICK ADAMS  
Collection of the artist
4. UNTITLED  
stoneware clay, high-fire glaze  
wheel-thrown, oxide brush decoration, gas fired, 1978  
MEL BOLEN  
Collection of the artist
5. AUGUST ONE  
handspun and commercial wool  
tapestry weave, 1978  
ANNE CLARK  
Collection of the artist
6. UNTITLED #2  
stoneware clay, porcelain and wood  
handbuilt, oxide decoration, high-fire glazes, 1978  
CHARLEY FARRERO  
Collection of the artist
7. LANDSCAPE PLATE #1  
stoneware clay, oxide  
wheel thrown by Marge Foley/hand painted by Louise Walters, 1978  
MARGE FOLEY/LOUISE WALTERS  
Collection of the artists
8. LANDSCAPE PLATE #2  
stoneware clay, oxide  
wheel thrown by Marge Foley/hand painted by Louise Walters, 1978  
MARGE FOLEY/LOUISE WALTERS  
Collection of the artists
9. LANDSCAPE PLATE #3  
stoneware clay, oxide  
wheel thrown by Marge Foley/hand painted by Louise Walters, 1978  
MARGE FOLEY/LOUISE WALTERS  
Collection of the artists
10. LANDSCAPED #1  
handspun wool, commercial wool and acrylic yarn  
tabby weave, 1978  
MARGARET JESSOP  
Collection of the artist
11. SCULPTURED LANDSCAPE  
commercial wool, tabby weave, double half-hitch knotting, 1978  
MARGARET JESSOP  
Collection of the artist
12. MIRAGE  
raku clay, low-fire glazes  
handbuilt, raku-fired, 1978  
OLIVE KALAPACA  
Collection of the artist
13. EARTHWORK #22  
raku clay, low-fire glazes  
handbuilt, underglaze pencil decoration, low-fire lustre glaze  
JOAN McNEIL  
Collection of the artist
14. VASE  
porcelain, pencil, lustre glaze  
handbuilt, underglaze pencil decoration, low-fire lustre glaze  
JOAN McNEIL  
Collection of the artist
15. LANDSCAPE SHAWL  
commercial wool, mohair  
twill and tapestry weave, 1978  
CATHRYN MILLER  
Collection of the artist
16. BELLEVUE HILL #1  
commercial wool, acrylic paint  
twill and tapestry weave on painted warp, 1978  
CATHRYN MILLER  
Collection of Dennis and Terry Harley, Saskatoon
17. ECLIPSE  
handspun and commercial wool, synthetic yarn  
tapestry weave, 1978  
CATHRYN MILLER  
Collection of the artist
18. UNTITLED  
handspun and commercial wool, natural and commercial dyes  
tapestry weave, 1978  
ANN NEWDIGATE MILLS  
Collection of the artist
19. PLATE  
stoneware, high-fire glaze  
wheel thrown, oxide decoration, 1978  
ROBERT OELAVRARD  
Collection of the artist
20. SET OF BOWLS  
porcelain, low-fire glaze  
wheel thrown, oxide decoration, 1978  
ROBERT OELAVRARD  
Collection of the artist



21. VASE  
porcelain, lustre glaze  
wheel thrown and hand built, 1978  
ROBERT CHAVARD  
Collection of the artist
22. SUE-ANNE'S TIPI CREEPERS  
leather, hand laced and stitched, 1978  
DAVID ORBAN  
Collection of Greta Wagner
23. AFTER THE SHOPPING SPREE  
stoneware clay, paint, lace, low-fire glaze and lustre glaze  
handbuilt, 1978  
WENDY PARSONS  
Collection of the artist
24. REVERSIBLE HOODED POMCHU  
commercial wool, mohair and wool bouclé  
three harness twill weave, 1978  
MURIEL PRIOR  
Collection of the artist
25. REDSPREAD  
commercial brushed wool  
three harness twill weave, 1978  
MURIEL PRIOR  
Collection of the artist
26. PRAIRIE DELIGHT  
modelling clay, low-fire glazes, hand-shaped, 1978  
EMMA RADFELDER  
Collection of the artist
27. UNTITLED  
stoneware, wheel thrown, hand-carved, 1978  
ANITA ROCAMORA  
Collection of the artist
28. SEA  
porcelain, lustre glazes, wheel thrown and handbuilt, 1978  
ANITA ROCAMORA  
Collection of the artist
29. CASSEROLE WITH STAND  
stoneware clay, high-fire glaze, wheel thrown, 1978  
HELEN ROGERS  
Collection of the artist
30. RAKU STORAGE JARS  
raku clay, raku glaze, handbuilt, raku fired, 1978  
JANETTE STAPLES  
Collection of the artist
31. SASKATCHEWAN LANDSCAPE COLUMN  
raku clay, underglaze pastels and stains, low-fire glaze, 1978  
JANETTE STAPLES  
Collection of the artist
32. LIDDED POT  
stoneware clay, medium-fire glaze, wheel thrown, 1978  
GAIL STECK  
Collection of the artist
33. LARGE VASE  
raku clay, lustre glaze,  
wheel thrown, raku fired, 1978  
CONNIE TALBOT-PARKER  
Collection of the artist
34. UNTITLED  
porcelain, duckworth glaze, wheelthrown, 1978  
CONNIE TALBOT-PARKER  
Collection of the artist
35. NEUTRALS  
natural fleece,  
handspun wool, machine and hand-sewn jacket, 1978  
MOIRA THEEDE  
Collection of the artist
36. "FEATHER AND FAN" BABY SHAWL  
merino fleece,  
handspun fleece, handknit in traditional  
"feather and fan" pattern, 1978  
MOIRA THEEDE  
Collection of the artist
37. PRICKLY POND  
hemp  
tapestry weave: navajo warping with vertical bars,  
loop and soumak, 1978  
GWENN TROUT  
Collection of Mr. & Mrs. K. W. Neumann, Regina
38. CLOUDS AND MOUNTAINS  
stained glass, copper foil, 1978  
JUDY WOOD  
Collection of the artist
39. THE SUMMER SOLSTICE  
cotton, batik, oak, 1978  
YOSHIMI WOOLSEY  
Collection of the artist
40. a) NEW YEAR (sun rise)  
b) PEACEFUL  
c) FAREWELL  
(three of a set of four entitled FOUR SEASONS)  
silk, batik, hand sewn, 1978  
YOSHIMI WOOLSEY  
Collection of the artist

Photography: Kate Williams  
Biennial Co-ordination: Pamela Acton  
Poster and catalogue design: Wayne Morgan  
Editing: Elise Stoesser



