

# DIMENSIONS GROWTH 2008



**SASKATCHEWAN CRAFT COUNCIL**  
813 Broadway Ave, Saskatoon



# contents

Lieutenant Governor's Message	1
Dimensions Growth 2008	2
Dimensions Growth Jurors	2
Charge to the Jury	3
Jurors' Statement	4

## AWARD WINNERS

Nicola D'Agnone	5
Michael Hosaluk	6
Rod & Denyse Simair	7
Cindy Lea Hoppe	7
Jane A. Evans	8
Lee Brady	8
Anna Hergert	9
Alison Philips	9
Megan J. Hazel	10
Rose Anne Watier	10
& Jude Marshal	
Paula Cooley	11
Laura Kinzel	11
Shelly Westberg	12

## SELECTED PARTICIPANTS

Melody Armstrong	12
Linda Billo	13
Mel Bolen	13
Nicola D'Agnone	13
Barbara Dawson	14
Gary Greer	14
Judy Haraldson	14
Michael Hosaluk	15
& Laura Hosaluk	
June J. Jacobs	15
Susan Kargut	15
Shelley Kaszefski	16
Leon Lacoursiere	16
Monique Martin	16
Cathryn Miller	17
G.R. Miskolczi	17
Rowan Pantel	17
Don Pell	18
Arthur Perlett	18
Mark Porcina	18
Anita Rocamora	19
Amy Spiers	19
Larry Trask	19
SCC Gallery	20
Itinerary	21

FRONT COVER: Nicola D'Agnone  
Lattice Reading Chair, 2007  
Featured on page 5

# award donors

**PREMIER'S PRIZE  
FOR THE OUTSTANDING ENTRY**  
\$3,000 donated by Government of Saskatchewan

**JANE TURNBULL EVANS AWARD  
FOR INNOVATION IN CRAFT**  
\$1,500 donated by Saskatchewan Arts Board

**CORINNE McKAY MERIT AWARD  
FOR SCC MEMBERS**  
\$800 donated by Saskatchewan Craft Council

**SCC MEMBER MERIT AWARD**  
\$500 donated by Saskatchewan Craft Council

**AWARD FOR EXCELLENCE IN CRAFT**  
\$250 donated by Artisans' Craft Market Co-operative

**AWARD FOR EXCELLENCE IN GLASS**  
\$250 donated by Saskatchewan Glassworkers Guild

**AWARD FOR EXCELLENCE IN WOOD**  
\$200 donated by  
Saskatchewan Woodworkers Guild

**AWARD FOR EXCELLENCE IN QUILTING**  
\$200 donated by Saskatoon Quilters Guild

**AWARD FOR EXCELLENCE IN TEXTILES**  
\$200 donated by  
Saskatchewan Weavers & Spinners

**AWARD FOR EXCELLENCE IN METAL**  
\$150 donated by Saskatchewan Knifemakers Guild

**AWARD FOR EXCELLENCE IN FUNCTIONAL  
& PRODUCTION WARE**  
\$300 donated by Cecilia Cote, Saskatoon

**AWARD FOR EXCELLENCE IN CLAY**  
\$300 worth of supplies donated by TREE, Saskatoon

**AWARD FOR EXCELLENCE IN SURFACE DESIGN**  
\$200 donated by Traditions Handcraft Gallery, Regina

**BATTLEFORD PURCHASE AWARD**  
\$375 (value of piece) donated by Town of Battleford

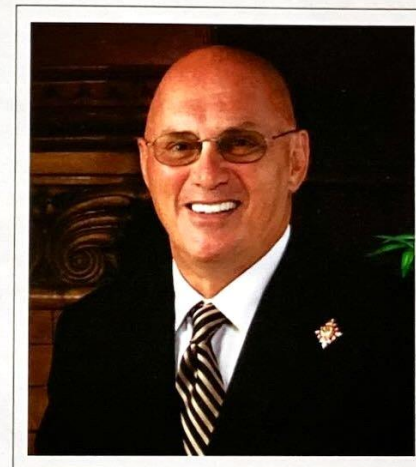
**AWARD FOR BEST INTERPRETATION OF THE THEME**  
\$200 Donated by Saskatchewan Craft Council

**AWARD FOR EXCELLENCE IN CRAFT BY AN  
EMERGING ARTIST**  
\$200 Donated by Handmade House, Saskatoon

We gratefully acknowledge the financial assistance  
of the following sponsors.



Saskatchewan  
Ministry of Tourism,  
Parks, Culture and Sport



A Message from His Honour  
The Lieutenant Governor of Saskatchewan

It is my sincere pleasure to extend greetings on behalf of Her Majesty Queen Elizabeth II, Queen of Canada, to all of the participants in Dimensions: Growth.

The exceptional caliber of this touring exhibit is indicative of the abundance of outstanding artists in Saskatchewan. The quality and creativity displayed in this exciting collection are most impressive. I congratulate all of the artisans whose works were selected by the jurors for this prestigious exhibition. The Saskatchewan Craft Council deserves tremendous credit for organizing this annual tour and for promoting our talented craftspeople in Saskatchewan and beyond.

Please accept my best wishes for a highly successful exhibit.  
Dr. Gordon L. Barnhart  
Lieutenant Governor  
Province of Saskatchewan



## Dimensions Growth 2008

Every spring the Saskatchewan Craft Council invites all Saskatchewan craftspeople to submit up to two hand crafted items for Dimensions, the only open, juried, touring exhibition of Fine Craft in the province. This year the jurors selected an exhibition of 35 works by 36 craftspeople based on the theme, "Growth". 93 craftspeople submitted 147 entries for consideration.

The ongoing success of Dimensions depends upon the generous support of a number of organizations including Saskatchewan Lotteries; the Saskatchewan Arts Board; the Government of Saskatchewan Ministry of Tourism, Parks, Culture, and Sport; and the Town of Battleford.

The award donors also make a substantial contribution to Dimensions, each focusing on a different area of craft creation. The Saskatchewan Craft Council acknowledges the contributions of the award donors and greatly appreciates their ongoing commitment.

## Dimensions Growth 2008 Jurors

Dimensions Growth 2008 was selected by Jamie Russell and Dr. Sandra Alföldy.

Jamie Russell is an internationally respected wood carver from Vanscoy, Saskatchewan. He has been working in wood since 1972, more specifically as a Fine Craft artisan since the early 1980's. Jamie has been involved in numerous workshops and seminars, both as a participant and as a teacher, and this experience has shaped his exploration with wood, a process he defines as "self directed learning". His work has been accepted into Dimensions 15 times since 1980, receiving the Premier's Prize in 1996. As well, his work has received wide acclaim in the Saskatchewan Wildlife Art Association's annual show, "Reflections of Nature", juried by some of the best carvers on the continent. Jamie's work can be found throughout Western Canada and in the USA from Washington and California to Philadelphia.

Sandra Alföldy is Professor of Craft History at Nova Scotia College of Art & Design University in Halifax, Nova Scotia. She received her Ph.D in Art and Design History from Concordia University in Montreal in 2001. She has written numerous books and articles on all aspects of craft and craft history and has been a keynote speaker at several conferences every year. As well, she has been a diligent reviewer of craft writers, publishers and exhibitions, and has contributed to numerous exhibition catalogues and other publications.

The Saskatchewan Craft Council thanks Jamie and Sandra for their valuable contributions and the detailed attention they gave to every entry.

## Charge to the Jurors

The Saskatchewan Craft Council entrusts highly qualified jurors with extensive knowledge of Fine Craft and different specializations to select the Dimensions exhibition. They were charged this year as follows: "We would like to clarify your roles and responsibilities regarding your Dimensions Growth jury duties. In the Juror Contract there is a requirement that you select approximately 35 items. It is your responsibility to select these works based on the SCC Standards & Jurying Criteria that we provided. Please note that the information on the various media is to assist you if you are unfamiliar with a particular craft and / or as a general reference."

"We ask that you not concern yourselves with taking on a curatorial role. It is your job to choose the best among all eligible entries. For our Dimensions exhibition, the SCC looks for works with unique, individual expression that transcend technique. They should have content as well as achieving technical and creative excellence. The SCC defines craft as follows: Fine Craft is an artistic endeavour characterized by the creation, with skill and by hand, of three dimensional work that is rooted in, and may transform, transcend, or maintain the traditions, techniques, and materials of the utilitarian object."

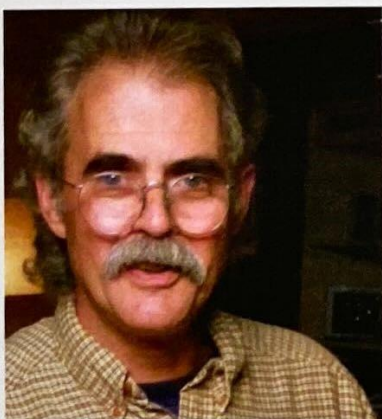
"For 2008, we have decided that Dimensions will also have a theme of "Growth". Entrants must interpret this literally, figuratively, spiritually, above all with creativity and innovation in Fine Craft. Each entry must have a short statement about the artist's interpretation of the theme. You will judge the entries on the basis of interpreting the theme, as well as achieving craft excellence."

"It is also your responsibility to designate items to receive the awards for this exhibition. The awards are to be chosen after the exhibition has been selected; therefore if there is no item that qualifies for a specific award, then there is no award given. It is of the utmost importance that the 'best' of craft be assembled in this exhibition; the SCC does not approve of 'token' awards... ."

"Your last responsibilities are to provide education about the process of judging Fine Craft and your decisions about works entered for Dimensions Growth. We need a written statement regarding your selections, and we hold a critique session open to the public... ."



## Jurors' Statement



Jamie Russell



Dr. Sandra Alföldy

When we met for the first time in the SCC gallery, it became clear that our different backgrounds in the crafts would work well as jurors for Dimensions. We taught each other a lot about how to look at particular works. We began with individual walks through to generate a starting point for our discussions, and by the end of the first day we had agreed on two-thirds of the selections. That left us with the difficult task of cutting a pool of thirty pieces roughly in half.

Our initial selection was composed of pieces that resonated with us instantly. Upon closer inspection, we determined whether the technical skill, concept or relation to the theme of "Growth" reinforced our reaction. Our individual strengths were complementary in helping us narrow down from the uniformly high quality of work before us.

While many of the makers in the show carefully considered the theme of growth as it related to nature, or personal and artistic development, it was obvious that for others it was an afterthought. We were a little disappointed in the number and quality of entries from some of our senior craftspeople, however, this was more than compensated for by the strong representation from emerging artists.

The diversity of approaches within each medium reflects the vitality of this community. We were surprised and pleased by the strength and diversity of submissions from stone carvers; however, blacksmiths were under-represented and there were very few glass pieces. Not a single stained glass object was submitted.

There were very few entries that we would not enjoy living with ourselves. We found a lot to get excited about, and the challenge was not deciding what had to be in, but what had to go out.

## AWARD RECIPIENTS

All measurements are in centimetres, height precedes width, precedes depth/diameter.

### Premier's Prize Award for the Outstanding Entry Award for Excellence in Wood



**NICOLA D'AGNONE**

Rouleau

**Lattice Reading Chair, 2007**

white oak, fabric, foam, lacquer  
steambending, mortise and  
tenon joinery

78 x 85 x 66cm

\$2,500.00 NFS

The design of the *Lattice Reading Chair* interprets growth literally through its shape. It branches out in a simple curve, similar to the natural form of the branches of an oak tree.

I have always enjoyed creating in almost any medium. In creating furniture, I am able to combine this passion with craftsmanship in creating functional art pieces.

The *Lattice Reading Chair* was designed for curling up with a good book. It is constructed using steam bent white oak and mortise and tenon joinery. My mother, Mary D'Agnone, is responsible for the upholstery.



## Jane Turnbull Evans Award for Innovation in Craft



**MICHAEL HOSALUK**

Saskatoon

***Future Species*, 2008**

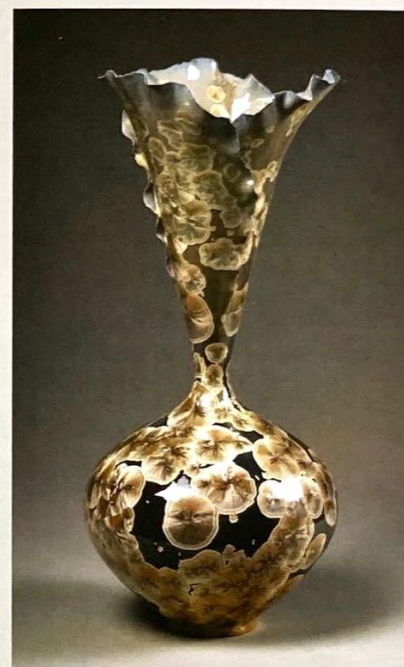
rawhide, linen thread waxed, arbutus  
turned, wrapped with wet rawhide,  
tied with thread

8 x 55 x 10cm each

\$2,200 / pair

These forms were imagined as cocoons. Emerging from them is imagined growth of new species of life.

## Corinne McKay Merit Award for SCC Members



**ROD & DENYSE SIMAIR**

Prince Albert

***Eden*, 2007**

porcelain, chemicals  
wheel thrown and altered,  
crystalline glazing  
57 x 27 x 27cm  
\$15,000

This piece marks a significant development in ceramic history. From the unfurling of its petals to the growth rings of the crystals, and even the gradation from dark to light, *Eden* signifies a dynamic rebirth and growth in the new Crystalline Renaissance.

*Eden* is a delicate crystalline porcelain vase which is hand thrown and sculpturally formed. The brilliant crystals have captured great clarity against the depth of tonal changes of the background. Our inspiration for creating is a spiritual journey drawn through prayer.

## SCC Member Merit Award



**CINDY LEA HOPPE**

Biggar

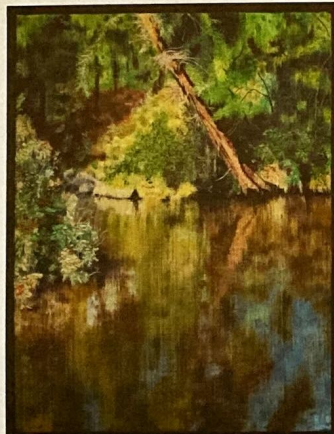
***Season of Growth*, 2008**

recycled, overdyed wool  
patchwork, machine  
embroidery, hand embroidery  
fabric crayon  
129 x 46cm  
\$600

After Pentecost in the Christian calendar, the season is all about growth. To me, that's all about the changes I see in the landscape around me from spring planting to harvest.



## Award for Excellence in Craft



**JANE A. EVANS**

Grandora

*Stream in a Forest/Forest in a Stream*, 2007  
textile paint; cotton, polyester, rayon threads  
warp thread painting, weaving, machine and  
hand embroidery  
46 x 36 x 3.5cm framed  
\$2,880

This stream fosters two forests. One is firmly rooted along the banks and is the essence of growth, simultaneously maturing, decaying, and regenerating. A shimmering second forest emerges where the water and the real forest combine visually.

The dual-version scene encouraged my skills to grow through exploring more painting and less stitching than I usually do in a piece.

## Award for Excellence in Glass



**LEE BRADY**

Saskatoon

*Forest Blind*, 2008

glass, aluminium silver stain  
fused glass, kiln textured and  
kiln formed  
47 x 58.5 x 9.5cm  
\$1,900

Through time, birds have engaged the dense, rich, random confusion of the forest growth as a camouflage for their future offspring. As the light filters through and around foliage, new colours and shadows emerge to engulf the precious new generation.

## Award for Excellence in Quilting Award for Excellence in Surface Design



**ANNA HERGERT**

Moose Jaw

*The City - Yesterday, Today, Tomorrow*, 2007  
hand-dyed and discharged cottons,  
commercial cotton, acetate, polyester  
sheer, paint  
machine and hand appliqué, stamping,  
printing, machine and hand stitching  
150 x 270 x 5cm  
\$8,100

Growth of urban centres occurs on the periphery first and the result is a neglected inner city - a true challenge for architects and urban planners. Today we witness a transition focusing on rejuvenating downtown areas. As for tomorrow: Look toward European cities where we witness the preservation and renovation of old buildings, painted in cheerful colours with trees and vines growing from rooftops and balconies — Utopia? Maybe not!

## Award for Excellence in Textiles



**ALISON PHILIPS**

Saskatoon

*Dogwood Shawl*, 2007

silk, tea dye  
handwoven, dyed in tea  
202 x 76cm  
\$400

This shawl represents personal growth for my weaving as I have never attempted a piece of this size in silk before.



## Award for Excellence in Metal



**MEGAN J. HAZEL**

Regina

**Brooch, 2008**

14K gold, sterling silver, copper  
rollerprinting, forging, engraving  
2.5 x 8.5 x 1cm  
\$339

This brooch started out from a few design drawings, then smoothly took a direction of its own. Copper, sterling silver and 14K yellow gold were soldered and formed together to construct this brooch. Rollerprinting and engraving bring the leaf texture to the surface.

## Award for Excellence in Functional & Production Ware



**ROSE ANNE WATIER / JUDE MARSHALL**

Big River

**Hand dipped beeswax candles, 2008**

beeswax, cotton wick  
hand dipped

65 x 7 x 7cm (large)

63 x 4 x 4cm (small)

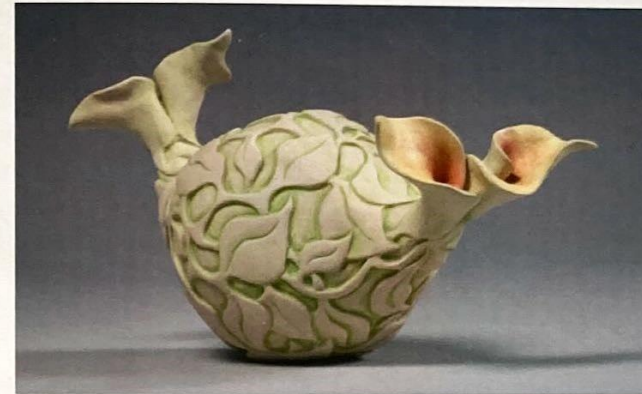
\$289.30 for both NFS

mwCandles.com creates unique sculptures as practical art.

Environmentally green natural beeswax was the original air freshener.

Our candles are individually and completely hand dipped. Oxygen, trapped in the 20 to 75 layers, increases the burn rate.

## Award for Excellence in Clay Town of Battleford Purchase Award



**PAULA COOLEY**

Saskatoon

**Creeper, 2008**

stoneware, underglazes  
hand-built, carved, fired  
in oxidation

14 x 25 x 10cm

\$375

I consider Creeper a 'growth form': a form that suggests germination and fecundity without being tied to a recognizable species. Creeper celebrates the natural world's innate capacity for growth and survival.

## Award for Best Interpretation of the Theme Growth



**LAURA KINZEL**

Saskatoon

**Whirligirls: The Spinsterhood, 2008**

buttons, beads, fabric, metallic and  
plastic wire, thread, wool, metal stand  
needle felting, beading, crochet, sewing  
61 x 35 x 45cm

\$1,500 NFS

This piece is like a cotton candy tornado, whirling with the growing strength of women who have found their power though life's experiences. It is part of my "stretchmarks" series, about my life as a middle-aged female.



## Award for Excellence in Craft by an Emerging Artist



**SHELLY WESTBERG**

Saltcoats

*Willow Basket*, 2008

red dogwood weavers, natural

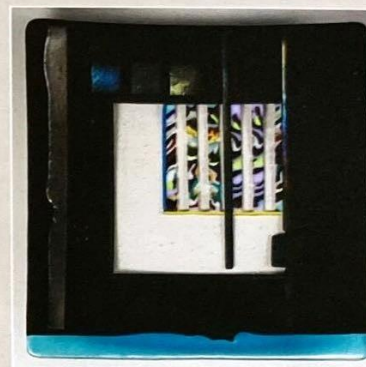
willow frame

freehand basket weaving

27.5 x 60 x 24cm

\$100 NFS

As a basket maker I depend on the new growth of the willow to weave my baskets. With the growth theme I intentionally looked for willow that I would not alter after cutting. Both the new and old growth is intact and visible. For me this was also a personal growth experience as a basket maker. I did not have the usual control over the end product. In a way the basket 'grew' as I wove taking on its own shape and beauty.



**LINDA BILLO**

Saskatoon

*Creation*, 2008

glass, iridized glass, pattern bars

fusing, sandblasting, slumping

5 x 37 x 37cm

\$700

**MEL BOLEN**

Humboldt

*Octopus Love*, 2007

stoneware clay, glaze, terra sigillata

wheel thrown, altered, impressed, slipped,

glazed, salt vapour fired

28 x 38 x 33cm

\$1,800 NFS

Collection of C. Hill, Humboldt



## SELECTED PARTICIPANTS



**MELODY ARMSTRONG**

Regina

*Propagation*, 2008

sterling silver, patina, hessonite garnet

fold forming, patina, stone setting

29 x 4 x 1.7cm

\$400



**NICOLA D'AGNONE**

Rouleau

*Untitled Display Cabinet*, 2007

mahogany, ash, bronze rods,

lacquer, stain

wood joinery, veneering

110 x 51 x 31cm

\$2,700





**BARBARA DAWSON**  
Saskatoon  
*Kaleidoscope Collection*, 2007  
cotton fabrics; rayon, metallic, and  
glitter threads  
machine pieced, machine quilted  
121 x 138 x 1cm  
\$1,200 NFS

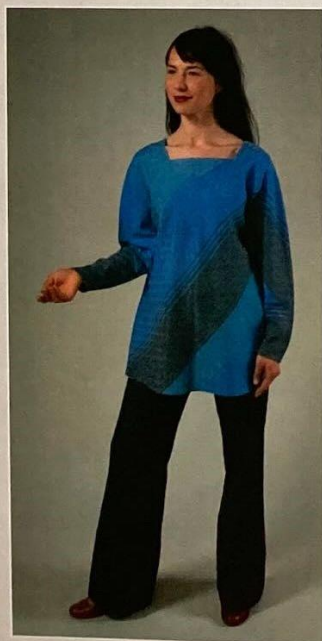


**MICHAEL HOSALUK  
& LAURA HOSALUK**  
Saskatoon  
*Strange Growth on Platter X*, 2008  
curly maple acrylic colours  
turning, drawing, colouring  
4.5 x 51 x 51cm  
\$1,600

**GARY GREER**  
Saskatoon  
*Midnite*, 2008  
440 C stainless steel,  
brass and micarta  
locking liner mechanism  
with file worked liners  
1.5 x 22.5 x 3cm  
\$350



**JUNE J. JACOBS**  
Meacham  
*Running Amuck*, 2008  
wool, silk, cotton and silk threads,  
metal stickpins, glass beads  
hand dyeing, hand felting, wrapping,  
beading  
25 x 25 x 57cm  
\$585



**JUDY HARALDSON**  
Saskatoon  
*Diagonal Top*, 2006  
Tencel rayon, polyester sewing thread  
handwoven, bias folded, machine and hand sewn  
women's medium size  
\$350



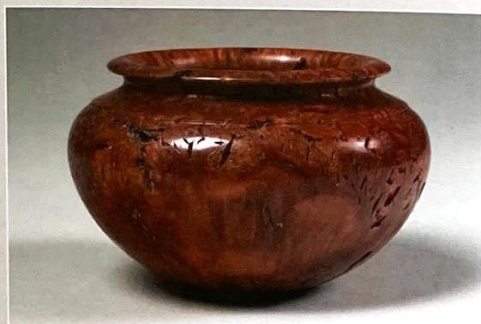
**SUSAN KARGUT**  
Saskatoon  
*Kimono for the Planting Moon*, 2008  
wool, silk, cotton, mohair, synthetic yarns  
intarsia handknitting  
104 x 133 x 1cm  
\$525



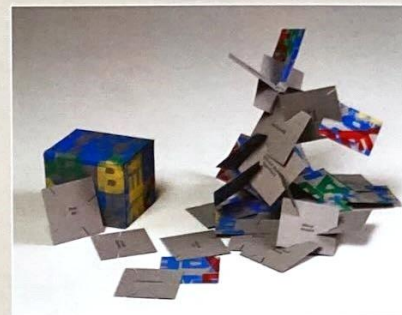


**SHELLEY KASZEFSKI**  
Saskatoon  
*Body Language*, 2007  
soapstone, oil, wax  
handcarved  
28 x 20 x 17cm  
\$1,000

**LEON LACOURSIERE**  
Delmas  
*Jarrah*, 2008  
wood  
hand turned  
11 x 16 x 16cm  
\$850



**MONIQUE MARTIN**  
Saskatoon  
*Dangling Carrots - Fame, Fortune, Happiness*, 2008  
ink, rice paper, thread  
linocut, hand printed  
90 x 32 x 3cm  
\$250



**CATHRYN MILLER**  
Grasswood  
*Tower of Babel (2/5)*, 2008  
acid-free cardstock and paper, davey board, block printing ink, PVA  
box construction, block printing, giclée printing, handcutting  
8 x 6.25 x 6.25cm (closed)  
\$500

**G.R. MISKOLCZI**  
Saskatoon  
*Showboat*, 2007  
bronze, wood base  
lost wax casting, patina  
53 x 53 x 23cm  
\$3,900



**ROWAN PANTEL**  
Saskatoon  
*Fort à la Corne, Trail 2 (state II)*, 2007  
waterless lithography inks, Mulberry natural and Lennox papers  
waterless lithography, rice paper  
chine-colle to Lennox  
133 x 79.5 x 4.5cm  
\$900







**DON PELL**

Bellevue

*Spring*, 2008

blown glass and forged steel  
traditional blacksmithing and glass  
blowing

71 x 15 x 14cm (vertical hanging)

\$1,300

**ARTHUR PERLETT**

Asquith

*Ripple*, 2008

quilted western maple, cherry, oil  
and lacquer finish  
traditional woodworking  
techniques, bent lamination

42 x 74 x 47cm

\$950



**MARK PORCINA**

Regina

*Untitled*, 2007

stoneware clay  
wheel thrown, hand decorated

70 x 25 x 17cm

\$1,000



**ANITA ROCAMORA**

Meacham

*Sprout I*, 2006

porcelain, oxides  
handbuilt, wood fired

42 x 11 x 12cm

\$350

**AMY SPIERS**

Saskatoon

*Blossom*, 2008

sterling silver, 24K gold, 12K  
gold, pink tourmaline

fabrication

12.5 x 8 x 8cm

\$500



**LARRY TRASK**

Nipawin

*Weed Play*, 2008

Brazilian soapstone, oil finish  
carved

43 x 31 x 25cm

\$2,800





# SASKATCHEWAN CRAFT COUNCIL gallery

## EXHIBITION SCHEDULE

### CONTAINED

Exhibition of textile, metal, wood and ceramic works which probe the meaning of the container in Newfoundland and Labrador.

June 13 - August 3, 2008

Reception: Friday, June 20, 7 - 9pm

### KAIJA SANELMA HARRIS - WEAVER

New Works representing the culmination of her remarkable career as one of Canada's finest textile artists. Curated by Cathryn Miller.

August 8 - September 28, 2008

Reception: Friday, August 8, 7 - 9pm

### SASKATCHEWAN FLAME

Contemporary wood fired ceramics demonstrating the use of wood for kilns and the effects that flame and ash leave on pots. Curated by Charley Farrero.

October 3 - November 23, 2008

Reception: Friday, October 3, 7 - 9pm

### DIMENSIONS - GROWTH

SCC's open, juried, touring exhibition of Saskatchewan Fine Craft with a theme of "growth."

November 28, 2008 - January 11, 2009

Reception: Friday, November 28, 7 - 9pm

### ELEMENTAL CONNECTIONS

An exploration of the relationship between craft and sustainability, addressing vital issues such as environmental impact and going green. Curated by Arlene Gehring and organized by the Ontario Crafts Council.

January 16 - February 22, 2009 (tentative)

Please check the SCC website for updated listings at [www.saskcraftcouncil.org](http://www.saskcraftcouncil.org)

**winterGreen**  
FINE CRAFT MARKET

CONEXUS  
ARTS CENTRE  
200 Lakeshore Dr  
Regina, SK

2	FRIDAY, Nov 14, 1 - 9pm	2
0	SATURDAY, Nov 15, 10am - 6pm	0
0	SUNDAY, Nov 16, 10am - 5pm	0
8		8

[www.saskcraftcouncil.org](http://www.saskcraftcouncil.org)

## Dimensions - Growth 2008

Published for the exhibition Dimensions Growth 2008, organized by the Saskatchewan Craft Council (SCC), a non-profit organization formed in 1975 to enhance and promote the craft community.

Craftspeople, supporters of craft, and the general public are served by the many and varied programs of the SCC, including gallery and touring Fine Craft exhibitions, craft markets, workshops, conferences, and publications. The SCC is an affiliated member of the Canadian Crafts Federation.

### SCC BOARD OF DIRECTORS

Ken Wilkinson	Louis J. Paquette
Dale Anne Potter	Milton Woodard
Paula Cooley	Karen Humble
Jeff Martens	Jacob Semko
Kim Laybourne	Wendy Weseen

### PROGRAM STAFF

Gale Hagblom  
Communications Coordinator  
Leslie Potter & Judy Haraldson  
Exhibitions & Education Coordinators

Photography: A K Photos

Printer: Globe Printers, Saskatoon

### DIMENSIONS - GROWTH ITINERARY

MacKenzie Art Gallery  
Regina, SK

Awards Ceremony & Reception  
Friday, June 13, 7 pm  
May 10 - August 17, 2008

Saskatchewan Craft Council Gallery  
Saskatoon, SK  
November 28, 2008 - January 4, 2009

Art Gallery of Swift Current  
Swift Current, SK  
January 10 - February 15, 2009

Chapel Gallery  
North Battleford, SK  
June 1 - July 20, 2009

Barr Colony Heritage Cultural Centre  
Lloydminster, SK  
August 1 - September 30, 2009

The E. A. Rawlinson Centre for the Arts  
Prince Albert, SK  
November 2 - December 31, 2009

Other venues to be announced.  
Dates may be subject to change.

© Saskatchewan Craft Council  
ISBN 0-921248-36-9

presented by



**SASKATCHEWAN CRAFT COUNCIL**

813 Broadway Ave, Saskatoon, SK S7N 1B5  
306.653.3616 • f/306.244.2711

[www.saskcraftcouncil.org](http://www.saskcraftcouncil.org) • [saskcraftcouncil@sasktel.net](mailto:saskcraftcouncil@sasktel.net)





Michael Hosaluk, *Future Species* (detail) featured on page 6